

62

Jr

Daylilies

1958

LIBRARY
RECEIVED
★ FEB 14 1958 ★
U. S. Department of Agriculture



ALWAYS MINE
See page 5



PINK RIPPLES
See page 15

From America's
Largest Grower
Russell Gardens

SPRING, TEXAS
PHONE SKYLINE 7-3536

Where America comes for Better Daylilies
at prices everyone can afford



MRS. H. M. RUSSELL
See page 13



GOOD NEWS
See page 10



RED TRUMPETS
See page 15

The Busy Man's
Flower — Plant Them
Once and Have Them
Always. They Thrive in
Any Climate, Any Soil,
Sun or Shade

Just What Are Daylilies?

WHERE, HOW AND WHEN WE SHOULD PLANT DAYLILIES

Daylilies are not bulbs. They are herbaceous perennials that should be planted from well-formed, vigorous roots. The first season should produce one to three bloom stems with from five to twenty flowers on each stem; if left undisturbed, the clump will increase in size and give many more bloom stems with more and larger blooms to the stem, every year thereafter. After six or seven years the clumps may be taken up and divided.

There are varieties that grow 12 inches tall and others 2, 3 and even 4 feet or more high; some have blooms not much larger than a half dollar, and others are larger than a salad plate.

The blooming seasons of different varieties vary from early spring to late fall. Each established variety blooms from four to six weeks, and by careful planning one can have a profusion of flowers in the garden from four to six months of the year.

No disease has ever been known to touch a Daylily. We have never spent 5c for insecticide in our nurseries.

Daylilies will grow in the hottest sun or partial shade. I do not recommend them in locations where they don't get at least half sun.

In planting Daylilies simply spread out the roots, cover them with only 1 inch or so of soil, and water. I like to plant Daylilies from 18

inches to 3 feet apart, depending on the variety. When your plants arrive not all of the roots will be the same size; that depends altogether on the variety. Some varieties with the largest bloom have smaller plants, while some small blooms have huge, robust plants.

My experience has taught me that any time is the best time to plant Daylilies, provided you get them in the ground a month or six weeks before your severest freezes. They are perfectly hardy—they can really take it. The flowering time mentioned in this catalog for each variety is for Texas; it will be about a month to six weeks later in extremely cold climates.

Remember, our plants are tested and proved hardy and you shouldn't lose one plant out of a thousand because of your weather conditions.

I believe Texas-grown Daylilies are better because of our year 'round growing weather. You may order when you like and we will hold your plants until you wish them delivered. Order early to avoid the disappointment of some varieties being sold out.

H. M. Russell
RUSSELL GARDENS
Spring, Texas

ROLL CALL
See page 15

GIFT OF TEXAS
See page 9

GOLDSWEPT
See page 9

LEE HIGGINS
See page 12



GARY RUSSELL - See page 9

60c Every Variety on This Page 60c

EACH

For an even more striking effect, Daylilies should be planted in groups of three or more of a kind. Any 10 for \$5.00. Any 20 for \$9.00.

EACH

AURANTIACA—Orange. (Species) Large wide blooms of orange and fulvous colorings. Ht. 2½ ft. May and June.

BABY TEARS. E. (Russell) **Rose.** 4" rosy petals; yellow sepals. Ht. 3'. May, June.

BAGDAD. D. (Stout) **Red.** Rich brown and red. Ht. 4'. May, June.

BELLE OF GEORGIA. D. (Russell) **Yellow.** 4" yellow, peach flower. Ht. 3 ft. April.

BESS BUCHANAN. D. (Russell) **Melon.** 5" cantaloupe melon. Rose veins. Ht. 3 ft. May.

BOUTONNIERE. D. (Stout) **Rose.** 3" Light rosy-peach. Ht. 3 ft. June.

BREEZE. E. (Russell) **Old-rose.** Rounded 4" semi-dwarf. Ht. 2'. April to June.

CINNABAR—Bi-Tone. Evergreen. (Stout) Yellow overcast richest cinnamon. Four inch bloom. Ht. 2½ ft. May and June.

DORIS—Bi-Tone. Dormant (Russell) Yellow-rose bi-color. 3½-inch bloom. Raised petals, pinched on the ends and richly tipped with rose. Ht. 3 ft. June and July.

FAR AWAY—Rose Salmon. Dormant (Russell) A true rose-salmon, 4-inch bloom with wide petals and huge golden throat. Ht. 2½ ft. May.

FLAMING SWORD. D. (Russell) **Red.** 3½" flaming red. Profuse bloom. Ht. 2'. May (See page 8.)

GARDEN OF ROSES. D. (Russell) **Rose.** Pale to deep salmon. Ht. 2'. Mid-Season.

GREAT MOMENTS. D. (Russell) **Red.** 3" brilliant Chinese red. Ht. 2'. June, July.

GUNSTON HALL. D. (Russell) **Red.** This tiny deep, 3" velvety red flower is one for the books. You wanted a dwarf for the foreground and here it is. Ht. 15". April.

HAZEL SAWYER. E. (Wheeler) **Pink.** Lavender-pink 4" flower. Ht. 3'. May, June.

HYPERION. D. (Mead) **Yellow.** 4" Lemon. Always in demand. Ht. 3'. May.

IN OUR TIME. D. (Russell) **Rose.** This ruffled 6" bloom is a true salmon over lemon with a green throat. This is one variety we believe will be in demand for many years to come. Ht. 3'. May & June.

JACK. E. (Watkins) **Red.** 3" Garnet red. Ht. 16". May.

J. T. RUSSELL. E. (Russell) **Lemon.** I know this is one of the most profuse blooming lilies and surely one of the most effective in our entire fields. No garden would have too much of this. Its soft red eye zone and its 6" bloom is simply bewildering. Ht. 3'. Mid-Season.

LADY FRANCES. D. (Russell) **Rosy Salmon.** Ruffled petals. 4" bloom. Ht. 3'. Mid-Season.

LAMARIA. E. (Russell) **Scarlet-Orange.** Fast grower. 4" bloom. Ht. 3'. Mid-Season.

LENA BROCK HOOVER. Dormant. (Russell) **Purple-Red.** Wide petals. 4½" bloom. Ht. 2½'.

LINDA. D. (Stout) **Rosy.** 4" rosy pink bloom. Ht. 3'. May & June.

LITTLE IMP. D. (Russell) **Yellow.** A true 3" canary yellow dwarf. Ht. 15". May, June.

LITTLE SIS. E. (Russell) **Yellow.** 2" bloom. Ht. 3'. June.

LONE STAR. D. (Russell) **Red.** Huge twisted petals. Ht. 3½'. Mid-Season.

MARTHA RUSSELL. D. (Russell) **Red.** 4" flower of rosy red. Ht. 3'. June.

MARY RICE FULLER. E. (Russell) **Canary-yellow.** Rosy eye. Ht. 3½". May.

MIKADO. E. (Stout) **Orange.** Red, purple eye zone. Ht. 3'. Mid-Season.

MING TOY. E. (Wheeler) **Bi-color.** Semi-dwarf. Magenta and orange bi-color. Ht. 2'. May.

MINNIE. E. (Hayward) **Red.** Glowing mahogany-red 4" with orange throat. Ht. 3'. July.

MT. VERNON. D. (Russell) **Bi-Color.** Lemon overcast coral-rose 5" bloom. Ht. 2½'. April. (See page 9.)

MY BUDDIE—Red. Dormant (Russell) Velvety mahogany-red, with ruffled petals and a sulphur-yellow throat. May and June.

NEODESHA. D. (Russell) **Red.** Wine-red 4" deep red eye zone. Ht. 2½". May, June.

OUR PET. D. (Russell) **Bi-Color.** 3½" bloom. Ht. 2'. April to June.

PURPLE WATERS. E. (Russell) **Wine.** Deep rich wine 4" flowers. Ht. 3'. April to June (See page 8.)

RED BIRD. E. (Stout) **Red.** 4" vermilion red. Ht. 3'. June.

RED TOKEN. D. (Russell) **Red.** Mahogany-red; purple eye zone. Ht. 2½'. May.

ROSE OF TEXAS. D. (Russell) **Rose.** A 5" flower of rosy red. Ht. 3'. April, May.

RUSSELL'S MINUET. D. (Russell) **Rose.** 4" rosy; canary sepals. Ht. 20". May. (See page 13.)

SKIPPY. D. (Russell) **Red.** 3" Brilliant multi-floral type. Ht. 3'. May.

SKYLARK. D. (Russell) **Lemon.** 4" lemon blooms of thick texture. Ht. 4'. June. (See page 15.)

SPRING PARADE. D. (Russell) **Raspberry.** 4" flower with deeper veins. Ht. 2'. April.

TEJAS. D. (Russell) **Red.** Circus wagon red 4" bloom. Ht. 3'. May, June.

THALIA. E. (Russell) **Yellow.** 5" yellow bloom overcast rose. Ht. 2½". May, June.

THERON. D. (Stout) **Red.** Curved, twisted petals. Ht. 3'. Mid-Season.

TRAIL OF GOLD. E. (Russell) **Gold.** 6" flower. Ht. 3'. May & June. See Page 10.

VEGA. E. (Wheeler) **Purple.** Deep wine, canary throat 4" bloom. Ht. 2'. May.

VULCAN. E. (Stout) **Red.** Deep red, orange throat. Medium size. Ht. 3'. Mid-Season.

See Page 9 for Bonus Offer

Any Variety on this Page

\$100

EACH

Any 3 for \$2.75 • Any 10 for \$7.50 • Any 20 for \$14.00

ABLAZE. E. (Russell) **Red.** Brilliant, velvety, 3½" bloom. Ht. 2½'. Mid-Season.

BAGGETTE. Dormant. (Russell) **Lemon-Old Rose.** Shaded petals. 5" bloom. Ht. 2½'. Early.

BLACK HILLS. Dormant. (Russell) **Red.** Really black-red, keeping well and glistening in contrast with other colors. Four-inch bloom. Ht. 3 ft. June, July. (See page 6.)

BLACK PRINCE. Dormant. (Russell) **Red.** Almost black and will stand up under the hottest sun. Ht. 3½ ft. April, May. (See page 13.)

CHARIOTEER. Dormant. (Nesmith) **Bi-Tone.** Red and yellow petals. Yellow midrib and cup. Ht. 52 in. July, August.

CONROE. Evergreen. (Russell) **Red.** Very deepest rose-red, slightly overcast purple, 2½-inch flower with a true buff throat. Another sensation in the dwarfs. Ht. 18". April, May.

DAWN FLIGHT. E. (Vaught) **Pink.** 5" gold, pink overlay. Ht. 3'. May.

FANCY TRIMMIN'S. D. (Russell) **Pink.** Ruffled, rosy pink petals and yellow sepals, deeply overcast with rose. Deeper rose eye zone. 3½" bloom. Ht. 18". June, July.

GRISELLE. E. (Saxton) **Rose.** 4" rose scarlet. Ht. 3'. May, June.

HAILE SELASSIE. E. (Wheeler) **Purple.** 5" purple maroon. Ht. 3'. June, July.

HERE'S HOW. D. (Russell) **Buff-Melon.** This 3" magnificent dwarf is the color of a ripe cantaloupe, and is about one of the most beautiful things in our entire field. A fast grower, and one that I am sure you will love always. Ht. 20". April, May.

HONEY REDHEAD. Semi-E. (Nesmith) **Red.** 4" bright red, cream border. Ht. 3'. June.

HOWDY. D. (Bremken-Armstrong) **Bi-Tone.** A 4" lemon and orchid. Ht. 3'. June.

JAMAICA. D. (Russell) **Orange Red.** Ruffled petals. 3" bloom. Ht. 3'. Early.

JUNIOR PROM. D. (Russell) **Buff.** Melon buff, purple eye 5" bloom. Ht. 3'. June.

LAMARQUE. E. (Russell) **Yellow.** True but-tercup yellow 5" bloom. Ht. 3'. May.

LITTLE INDIAN. D. (Russell) **Red.** 3" Multifloral type. Ht. 3'. June.

MAKE BELIEVE. E. (Russell) **Red.** Wide 4" petals. Ht. 3'. Mid-Season.

MRS. B. F. BONNER. Evergreen. (Russell) **Yellow.** Pale lemon, wide petaled 6" bloom. Free flowering, long blooming season. Ht. 2½ ft. May, June. (See page 6.)

MRS. C. C. HUFF. D. (Russell) **Purple.** 5" Lavender purple, buff throat. Ht. 3'. May.

MRS. HUGH JOHNSON. D. (Russell) **Red.** 4" fiery red velvet. Ht. 3'. April, May.

PAI PEI. D. (Russell) **Pink.** 4" rosy pink. Ht. 2'. May, June.

PRAIRIE DREAM. D. (Russell) **Brown.** 4" rosy brown, green throat. Ht. 2'. June.

RED MOON. D. (Russell) **Red.** Huge 5" orange, red. Ht. 3'. May, June.

ROYAL RUBY. E. (Nesmith) **Red.** 4" crimson red, unusual. Ht. 3'. May, June.

SPANISH MAIN. Semi-E. (Russell) **Pink.** 3" shell pink. Ht. 2'. June.

SUDDEN SHOWERS. D. (Russell) **Pink.** 4" salmon pink. Ht. 20". May, June.

TAJ MAHAL. Evergreen. (Russell) **Bi-Tone.** Rich chrome color with a velvety sheen and a wide eye zone of the richest purple-red. Five-inch bloom. Ht. 2'. Very early. (See page 17.)

TAMIAMI. E. (Watkins) **Red.** 5" Pompeian red. Ht. 3'. May, June.

TEXCAPADE. D. (Russell) **Red.** Another 4" dwarf vivid red. Ht. 18". May, June.

See Page 9 for Bonus Offer

● The first flowers on a newly planted Daylily will not give you a full conception of the true character of that particular variety, for they are usually small and in some cases not so intense in color as they will be after becoming estab-

lished. Give them a full season's growth before you pass judgment, and I believe you will say that they are the most beautiful flowers and the easiest to grow that you have ever tried.

OUR
Proven Standbys

**We Pay Postage
on all orders
amounting to
\$5.00 or more
. . . otherwise
please add
50c to cover
postage and
handling.**

• • •

**SEE
PAGE
9
FOR
BONUS
OFFER**

ANDREW RUSSELL. Dormant. (Russell)
Lavender.

This wide six-inch flower could best be described as a rose over lavender. Gold throat and ruffled, it is a jewel among jewels. Ht. 3 ft. June, July. \$3.00 each; 2 for \$5.00.

ANOTHER SONG. Dormant. (Russell) Pink.

A gorgeous rosy pink with semi-rounded blooms and deep chartreuse throat. Late in the afternoon after the sun has beaten on it all day, the flower still looks fresh. It is slightly recurved and the ends of the petals are slightly twisted, with small veins running through them. 3-inch bloom. Ht. 2½ ft. June, July. \$2.00 each; 3 for \$5.00.

ANN RUSSELL. D. (Russell) Chrome. This beautiful 4" deep yellow bloom has texture like leather and defies the hottest sun. Ht. 3'. May, June. \$2.25 each.

ANN RUSSELL



Any Variety on this Page **\$100**

EACH

Any 3 for \$2.75 • Any 10 for \$7.50 • Any 20 for \$14.00

ABLAZE. E. (Russell) Red. Brilliant, velvety, 3½" bloom. Ht. 2½'. Mid-Season.

BAGGETTE. Dormant. (Russell) Lemon-Old Rose. Shaded petals. 5" bloom. Ht. 2½'. Early.

BLACK HILLS. Dormant. (Russell) Red.

Really black-red, keeping well and glistening in contrast with other colors. Four-inch bloom. Ht. 3 ft. June, July. (See page 6.)

BLACK PRINCE. Dormant. (Russell) Red. Almost black and will stand up under the hottest sun. Ht. 3½ ft. April, May. (See page 13.)

CHARIOTEER. Dormant. (Nesmith) Bi-Tone.

Red and yellow petals. Yellow midrib and cup. Ht. 52 in. July, August.

CONROE. Evergreen. (Russell) Red. Very deepest rose-red, slightly overcast purple, 2½-inch flower with a true buff throat. Another sensation in the dwarfs. Ht. 18". April, May.

DAWN FLIGHT. E. (Vaught) Pink. 5" gold, pink overlay. Ht. 3'. May.

FANCY TRIMMIN'S. D. (Russell) Pink. Ruffled, rosy pink petals and yellow sepals, deeply overcast with rose. Deeper rose eye zone. 3½" bloom. Ht. 18". June, July.

GRISELLE. E. (Saxton) Rose. 4" rose scarlet. Ht. 3'. May, June.

HAILE SELASSIE. E. (Wheeler) Purple. 5" purple maroon. Ht. 3'. June, July.

HERE'S HOW. D. (Russell) Buff-Melon. This 3" magnificent dwarf is the color of a ripe cantaloupe, and is about one of the most beautiful things in our entire field. A fast grower, and one that I am sure you will love always. Ht. 20". April, May.

HONEY REDHEAD. Semi-E. (Nesmith) Red. 4" bright red, cream border. Ht. 3'. June.

HOWDY. D. (Bremken-Armstrong) Bi-Tone. A 4" lemon and orchid. Ht. 3'. June.

JAMAICA. D. (Russell) Orange Red. Ruffled petals. 3" bloom. Ht. 3'. Early.

JUNIOR PROM. D. (Russell) Buff. Melon buff, purple eye 5" bloom. Ht. 3'. June.

LAMARQUE. E. (Russell) Yellow. True but-tercup yellow 5" bloom. Ht. 3'. May.

Remember . . .

**Our Plants are
hardy Permanent
Perennials.
Proven so from
Maine to California.**

• • •

**SEE
PAGE 9
FOR
BONUS
OFFER**

See Page 9 for

• The first flowers on a newly planted Daylily will not give you a full conception of the true character of that particular variety, for they are usually small and in some cases not so intense in color as they will be after becoming estab-

OUR Proven Standbys

ACAPULCO. D. (Russell) Red. This light, showy red with its full-bodied wide petals and deepest apple green throat has two complete blooming seasons. Ht. 2½'. April, May, and again in July. \$2.50 each.

ALWAYS MINE. Dormant. (Russell) Lemon.

This fully rounded, 4-inch, ruffled flower is of the palest lemon to lime color. If I had a thousand yellow varieties, I would want this. It is an extremely fast grower and seems to bloom forever. Ht. 3 ft. June, July, \$3.00 each; 2 for \$5.00. (See front cover.)

AMHERST. Evergreen. (Wheeler) Purple.

Light purple flowers with white mid-ribs. Large blossom has a pale yellow throat. Ht. 3 ft. April, May. \$2.00 each; 3 for \$5.00.

ALICE RUSSELL. Dormant. (Russell) Pink.

A five-inch truly pink flower with no lavender. Ht. 3 ft. May, June. \$15.00

ANDREW RUSSELL. Dormant. (Russell)

Lavender.

This wide six-inch flower could best be described as a rose over lavender. Gold throat and ruffled, it is a jewel among jewels. Ht. 3 ft. June, July. \$3.00 each; 2 for \$5.00.

ANOTHER SONG. Dormant. (Russell) Pink.

A gorgeous rosy pink with semi-rounded blooms and deep chartreuse throat. Late in the afternoon after the sun has beaten on it all day, the flower still looks fresh. It is slightly recurved and the ends of the petals are slightly twisted, with small veins running through them. 3-inch bloom. Ht. 2½ ft. June, July. \$2.00 each; 3 for \$5.00.

ANN RUSSELL. D. (Russell) Chrome. This

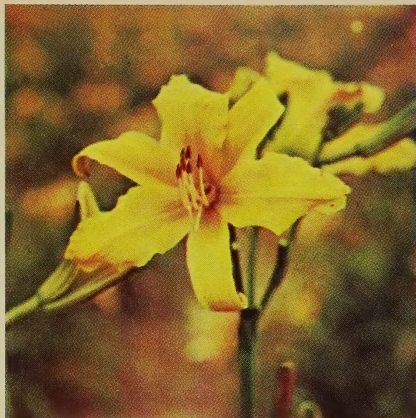
beautiful 4" deep yellow bloom has texture like leather and defies the hottest sun. Ht. 3'. May, June. \$2.25 each.

ALICE RUSSELL



ANN RUSSELL





BETTE RUSSELL

BETTE RUSSELL. Evergreen. (Russell) **Lemon.**
Wide six-inch flower. Extremely profuse bloomer. A new break in forms. Ht. 3 ft. May, June, again July, August. \$10.00.

BLACK HILLS
See page 4



AQUAMAID

AQUAMAID. Evergreen. (Russell) **Chartreuse.**
Widest and, I believe, the finest ruffled petaled 6" flower in our entire field in this color class. Palest lemon with a touch of green. Ht. 2½ ft. May, June, \$5.00.

BERMUDA LASS. Evergreen. (Russell)
Red-Dwarf.

This magnificent circus red midget, growing only 18 inches in height is simply ablaze with its 3 inch flower in bloom. You have wanted a colored dwarf, so here it is. Ht. 18 in. May, June. \$2.00 each; 3 for \$5.00.

BRIDE'S KISS. E. (Russell) **Rosy Red.** This rosy flower with its widest petals and green throat gives a contrast rarely seen in Daylilies. Ht. 3'. April, May and June. \$3.00 each.

CANYON PURPLE. Dormant. (Nesmith)
Purple.

One of the finest steps toward a bluish Daylily. It is a dark red variety with an overlay or sheen of plum or prune-purple, which is highly distinctive. Very nice broad flowers. Ht. 38 in. Mid-season. \$2.00 each; 3 for \$5.00.

CAPTAIN RUSSELL. Dormant. (Russell)
Lavender.

This is a magnificent six-inch lavender flower with ivory sepals. One of the most beautiful and unusual color breaks found in our entire field. An extremely profuse bloomer. Words simply cannot describe the beauty of this lily. Ht. 3 ft. May, June. \$10.00.

*See Page 9
for
Bonus Offer*

MRS. B. F. BONNER
See page 4

VEN STANDBYS

CATHEDRAL TOWERS. Evergreen. (Milliken)
Bi-Tone.

Soft yellow with bold red-brown cathedral spires eye zone. Ht. 3 ft. Truly lovely. May-June. \$2.00 each; 3 for \$5.00.

CHARLES RUSSELL. Dormant. (Russell.) Rose Wine. I would say this was one of the top ten Daylilies of the world. This photograph does not do it justice. It is a rosy wine more on the rose side with the deepest wine veins and a velvet sheen. A very profuse bloomer. 5" flower. Ht. 2 ft. April and May again in July. \$20.00.

CHARLOTTE RUSSELL. E. (Russell) Pink. This widest of wide petaled deepest coral pink with its wine veins has a huge green throat. One of the most profuse blooming flowers in our fields. \$3.00 each.

CINDY RUSSELL. Dormant. (Russell)
Buff-Purple.

This medium height, wide five-inch flower is a true buff with the deepest purple eye zone. Ruffled. Pale canary throat. Ht. 20 inches. April, May, June. \$3.00 each; 2 for \$5.00.

*See Pages 19 Thru 24
for Collections and
Unnamed Varieties*

COLLECTOR'S ITEM



COLLECTOR'S ITEM. Evergreen. (Russell)
Red.

An extremely wide flower of rich tomato-red. Petals slightly ruffled. I would call this a really glorified Mrs. Hugh Johnson, much larger, with a tiny green throat. May-June. \$3.00. 2 for \$5.00.

CRIMSON PIRATE. D. (H. E. Sass) Red. 5"
Mikado orange, red. Ht. 3'. May. \$2.25 each.

DAISY FERRICK. Evergreen. (Russell) Lemon.

Huge eight-inch flower—three feet tall with as many as thirty buds on a stem. Everyone in this nursery makes a "B-line" to see this plant. Extremely hardy. Ht. 3 ft. May, June. \$5.00.



CHARLES
RUSSELL

DAISY FERRICK





FLAMING SWORD
See page 3



PURPLE WATERS
See page 3

DROPS OF GOLD. D. (Russell) Yellow. We do not believe that a Daylily could be better named. This variety only grows 2' high and, while its flower is only about 3½" wide, its wide petals overlap its sepals and the whole flower is slightly recurved. This is truly the most beautiful of all canary yellows and a whole page would be required to give you a complete description. Ht. 2'. May, June and July. \$5.00 each.

E. A. RUTHERFORD. E. (Russell) Rose. 5" deeper old rose veins. Ht. 3'. May. \$2.25.

EDGAR JANAC. Semi-Evergreen. (Russell) Gold.

This widest of wide petaled, deepest of deep gold, slightly ruffled 6-inch flower was the most popular golden flower in our display gardens for the past several seasons. Ht. 2½ ft. May, June. \$3.00 each; 2 for \$5.00.

D. R. McKEITHAN. Semi-E. (Russell) Copper. 7" yellow, copper overlay. Ht. 2'. May. \$2.25 each.



D. R. McKEITHAN

EMILY BROWN. Dormant. (Russell) Yellow.

A deep yellow Daylily with texture like leather and a sheen that absolutely glistens in the sun. The wide five-inch bloom is really breathtaking, and I am proud to be responsible for the introduction of this jewel of jewels. Ht. 3 ft. May, June. \$3.00 each; 2 for \$5.00.

EVELYN CLAAR. D. (Kraus) Pink. Finest 4" salmon pink. Ht. 3'. \$2.25 each; 3 for \$5.50.

FOREST FURY. D. (Russell) Red. 4" cardinal red, green throat. Ht. 18". June. \$2.25.

GARNET ROBE. Evergreen. (Milliken) Red.

Glowing deep velvety red, with yellow-green throat. Very attractive and a fine performer the country over. Ht. 3 ft. June, July. \$1.50 each; 3 for \$4.00.

EVELYN RUSSELL. Dormant. (Russell) Bi-Tone.

This beautiful four-inch flower is an extremely profuse bloomer with as many as thirty-five buds on a stem. Ht. 3 ft. June, July. \$5.00.



EVELYN RUSSELL



MT. VERNON
See page 3

GARY RUSSELL. Evergreen. (Russell)
Chartreuse.

This huge seven-inch flower is truly a green tinted lemon, and is absolutely a breath taker. One of the very few real chartreuse Day-lilies. Ht. 3½ ft. May, June. \$5.00. (See page 2.)

GIFT OF TEXAS. Dormant. (Russell)
Chartreuse.

Huge 6" widest petaled, palest yellow with a green tinge. A Connoisseur's delight. Ht. 2½ ft. May, June. \$5.00. (See page 2.)

GOLD BONANZA. Dormant. (Russell) Gold.
This magnificent 5" fully rounded, recurved bloom is of the deepest gold. One of the showiest wide petaled profuse bloomers in our fields. If you think you have a yellow you will think again when you see this one. Ht. 3 ft. May and June. \$3.00.

GOLDSWEPT. Dormant. (Russell) Yellow.
Wide, five-inch flowers with overlapping petals of the deepest yellow, quite different from any other yellows in our fields. It has the finest texture, and the flower is slightly recurved. Ht. 2½ ft. April and July. \$3.00 each; 2 for \$5.00. (See page 2.)



GOLD BONANZA

Read This
**BONUS
OFFER**

EXTRA PLANTS

FREE

It Applies to Everything Listed in this Catalog! By taking advantage of this Bonus Offer, you will get rare plants equal in value to as much as 50% of your entire order, FREE of extra charge. (See Scale Below)

<p>Your Order of \$8.00 to \$15.00 ENTITLES YOU TO A</p>	<p>Your Order of \$15.00 to \$25.00 ENTITLES YOU TO A</p>
<p>25% BONUS In Rare Plants of Our Choice</p>	<p>33 1/3 % BONUS In Rare Plants of Our Choice</p>
<p>Your Order of \$25.00 to \$40.00 ENTITLES YOU TO A</p>	<p>Your Order of OVER \$40.00 ENTITLES YOU TO A</p>
<p>40% BONUS In Rare Plants of Our Choice</p>	<p>50% BONUS In Rare Plants of Our Choice</p>



GOV. MIRIAM FERGUSON



HIGH AND MIGHTY



TRAIL OF GOLD
See page 3

GOOD NEWS. Dormant. (Russell.) Purple. This open flat 5" flower has pale yellow petals with wide purple tips. The sepals are pale yellow. A magnificent thing in a flower arrangement. Ht. 2½ ft. May and June. \$3.00. (See front cover.)

GOV. MIRIAM FERGUSON. Evergreen. (Russell) Yellow.

This huge seven-inch yellow flower has an overcast of the lightest copper. Another marvelous variety developed from one of the sisters of "Painted Lady." Ht. 3 ft. May, June. \$3.00 each; 2 for \$5.00.

HERBERT MORGAN. E. (Russell) Yellow. Triangle shape 4" pumpkin yellow. Ht. 3'. June. \$2.25.

HIGH AND MIGHTY. Evergreen. (Russell.) Combination Color. This huge 7" wide open flower has a pale yellow background overcast with the slightest rose sheen and a faint lavender edge around the entire flower. The backs of the sepals are apple green. Magnificent. Ht. 3 ft. April, May, again in July. \$5.00.

JAKE RUSSELL. Dormant. (Russell) Gold.

This is the most beautiful flower I have ever seen in all of my thirty years observing Daylilies. It is wide, a fully rounded, slightly recurved flower with an extremely heavy texture and slightly ruffled, remaining open far into the night. This flower has a velvety sheen on its petals that has never before been seen in a Daylily. Its stems are as straight and erect as a garden stake, each having as many as forty buds. Sold with a strict money back guarantee so that after it blooms if you are not entirely satisfied you may return it that season and your money will be refunded. Under no circumstances will we sell more than one plant to a single customer. 4½-inch flower. Ht. 3 ft. April, May and July, August. \$50.00 each.

See Page 9

JEWEL RUSSELL. Evergreen. (Russell)

Lemon

This 7- to 8-inch bloom is pale lemon. Its petals are ruffled and recurved, and its foliage is blackish green. Ht. 3 ft. \$3.00; 2 for \$5.00.

JOE HOUSE. Semi-Evergreen. (Russell) **Pink.**

This beautiful 6-inch, wide-petaled, lavender-pink flower, with deeper veins running through its ruffled petals, is the type flower one would expect to be named for an old friend, the distinguished past President of the Hemerocallis Society. Its sepals are slightly lighter and recurved. The throat is a cool deep apple-green. An extremely fast multiplier, hence the price. Ht. 3½ ft. May, June. \$3.00; 2 for \$5.00.

JUNGLE PRINCESS. Evergreen. (Russell)

Purple.

A deep wine-purple six-inch flower; wide petals, buff throat. We think this one of the finest ever produced. Recurved. Ht. 3 ft. June, July. \$2.00 each; 3 for \$5.00.

KATHLEEN RUSSELL. Evergreen. (Russell)

Gold. This extremely wide petaled 6" flower is of the richest gold. A full flat bloom ruffled and slightly recurved. This flower is worth twice the price we are asking, but is an extremely fast multiplier. Ht. 2½ ft. April, May, again in July. \$3.00.

KISS OF FIRE. E. (Russell) **Red.** Tiny brilliant true circus wagon red. One of the much sought-after dwarfs for the foreground of the taller varieties. 3½" medium wide bloom. Simply ablaze with color. A truly fast multiplier and one that you'll wish you had your whole garden bordered in. Ht. 15". April and May. \$3.00.

LAURA RUSSELL. E. (Russell) **Gold.** Huge full, widest of wide, overlapping pale, gold petals. 4½" bloom. A canary color which you probably do not have in your collection. Ht. 2'. May and June. \$5.00.

LAVERNE HODGES. D. (Russell) **Red.** 6" cardinal red. Ht. 3'. June. \$2.25.



JEWEL RUSSELL



JOE HOUSE



KATHLEEN RUSSELL

for Bonus Offer



LAVERNE HODGES



MARION MOBLEY

LEE HIGGINS. D. (Russell) Buff. 7" buff yellow. Ht. 2'. June. (See page 2.) \$2.25.

LIME GROVE. E. (Russell) Chartreuse. 7" palest lemon. Ht. 3'. April, May. \$2.25.

LITTLE JUDY. D. (Russell) Pink. A true rose pink with a green throat. 4½" ruffled bloom. Truly a fine pink in anyone's collection. Ht. 2½'. May and June. \$3.00.

MAINLINER. D. (Russell) Ivory. 4" ivory buff, purple eye. Ht. 20". April. \$2.25.

MARION MOBLEY. Dormant. (Russell) Melon. An extremely twisted petaled melon cantaloupe colored 6" flower with a rosy copper zone. Ht. 2½ ft. May and June. \$5.00.

MARION RUSSELL. D. (Russell) Red. A 7" flower of brilliant cherry red with a huge apple green throat. Ht. 2½'. May and June. \$5.00.

MARY WILLIAMS. Evergreen. (Russell) Copper.

A seven-inch flower of the faintest copper with a deeper rosy-purple wide eye zone. Extremely ruffled. Ht. 3½ ft. June, July. \$5.00.

METEOR. Evergreen. (Russell) Bi-Tone.

Lovely shade of deep yellow with a huge buff rose eye zone. Keeps perfect. Six-inch bloom. Ht. 3 ft. April, May, June. \$3.00 each; 2 for \$5.00.

MIDWEST MAJESTY. D. (H. P. Sass) Yellow. 6" yellow flower. Ht. 3'. June. \$2.25 each.

MISS NAN. Semi-E. (Russell) Lemon. 7" palest lemon. Ht. 3'. May. (See page 13.) \$2.25.

MISTER. E. (Russell) Tan. 8" copper flower. Ht. 3'. May. \$2.25. (See page 13.)



See
Page 9
for
Bonus
Offer

MILLIE RUSSELL. Dormant. (Russell) Gold. This beautiful widest of wide petaled ruffled 4" flower is practically rounded of a true canary color. Creped. Stiff, erect stems hold this flower of the best texture, and one that you will hear from fifty years from now. Ht. 2½ ft. May, June, July. \$7.50.

MRS. H. M. RUSSELL. Semi-Evergreen.
(Russell) Buff.

This is the first gladiolus-flowered Daylily. To us here at the nursery, and the many thousands of visitors who have seen it, we think it is one of the loveliest, nearest perfect Daylilies that ever came into being. Its buff-yellow is four inches across and comes in profusion on a three-foot, stiff, erect stem. It is about the cleanest-looking formal-shaped blooms I have ever seen. May, June. \$15.00. (See front cover.)

MRS. J. C. HARDING. Semi-Evergreen.
(Russell) Wine.

This light shade of burgundy-wine with its buff-green throat is a rich pastel you will be proud to own. Recurved, 3½-inch flower. Ht. 2½ ft. April, May. \$2.00 each; 3 for \$5.00.

MRS. LEON RUSSELL. Dormant. (Russell)
Rose.

This wide six-inch flower of the lightest rose with ivory sepals and a true buff throat and its stiff, straight stems is extremely late, blooming here in July and August. Ht. 2 ft. \$5.00.

MRS. MALCOLM RUSSELL. Evergreen.
(Russell) Tan.

If you think our "Painted Lady" is a big flower, you should see this ten-inch flower standing three and a half feet tall with as many as thirty buds on a stem. Its wide petals are of the lightest copper. Frankly, it is the largest and most beautiful of all the tan daylilies. Keeps far into the night. Ht. 3½ ft. June, July. \$10.00.



MISS NAN See page 12



MISTER See page 12

BLACK PRINCE
See page 4

PARAMOUNT
See page 14

RUSSELL'S MINUET
See page 3





MURRAY RUSSELL



NANETTE RUSSELL

More PRO

MURRAY RUSSELL. Dormant. (Russell) Red. Rich velvety red with a pale midrib. One of the most profuse bloomers and surely the most sought after red in our fields. Ht. 2½ ft. May, June. \$3.00 each; 2 for \$5.00.

MY FANCY. D. (Russell) Gold. Huge 6" flower of the deepest deep gold with a velvety sheen that glistens in our hottest sun. A real beauty in this color. Ht. 2'. May and June. \$3.00.

NANETTE RUSSELL. Evergreen. (Russell) Yellow. This huge 7" wide petaled pale yellow flower with its green throat and recurved petals is a most profuse bloomer and an eye catcher a block away. Ht. 2½ ft. April and May. \$5.00.



PAINTED LADY

NEWPORT GREEN. D. (Russell) Lime. 6" palest green lime flower. Even the reverse of the sepals is apple green. Truly an eye catcher. Words can't describe the beauty of this color. Ht. 2½'. May and June. \$3.00.

NEW SILVER. E. (Russell) Yellow. Huge 7" flower of the palest pale yellow slightly overcast with the faintest rose. Deeper rosy wine eye zone and immense apple green throat. The entire flower is ruffled and wide petaled. Diamond dusted. Ht. 3'. May and June. \$3.00.

PAINTED LADY. Evergreen. (Russell) Cinnamon.

As if the unusual colors and giant size of this flower were not enough to put it in a class all by itself, nature gave it the added beauty of deep ruffles on the petals. The bloom is 8 to 9 inches across and the color is deep yellow, overcast with a light even cinnamon, with darker veins in petals and sepals and a still darker eye zone. A most profuse bloomer. This Daylily topped the Hemerocallis polls for 3 years. Ht. 3 ft. May, June. \$1.50.

PARAMOUNT. Evergreen. (Russell) Red. This wide-petaled Daylily of rich red, ruffled and slightly recurved, is an unusually profuse bloomer. Ht. 2½ ft. June, July. \$1.50 each. (See page 13.)

PEACH HONEY. D. (H. P. Sass) Yellow. 5" yellow, orange eye. Ht. 3'. June. \$2.25.

PEARL SHERWOOD. Evergreen. (Russell) Gold. This huge seven-inch, palest of pale gold (not lime) flower has very wide petals and is truly a sight in bloom. Ht. 3½ ft. May, June. \$10.00.



SKYLARK
See page 3



PINK SUPREME

EVEN STANDBYS

PINK ALLURE. D. (Russell) **Pink.** This beautiful 3", wide petaled shell pink with its green throat is truly an eye catcher. Ht. 2½'. May and June. \$4.00.

PINK DAMASK. Dormant. (Stevens) **Pink.** This is a rose pink self and seems to have everything that a Daylily should have. Ht. 40 inches. May, June. \$3.00.

PINK ELF. E. (Russell) **Pink.** 3" coral pink flower. Ht. 18". June. \$2.25.

PINK PERFECTION. Dormant. (Russell) **Pink.** This dainty little true pink with its green star-shaped throat and its fringe flower is one of the most profuse bloomers and surely a jewel for those seeking pinks. Ht. 3 ft. May, June. \$2.00 each; 3 for \$5.00.

PINK PRELUDE. Semi-Dormant. (Nesmith) **Pink.** Lovely, dawn-pink. A self except for a pale flesh-pink midrib on the petals and just a touch of cool yellow at the base of the sepals and petals. The lightly fluted flower does not seem to have a trace of salmon in it. Large, full blooms and good branching. Ht. 39 inches. July, August. \$7.50.

PINK PHAPSODY. D. (Russell) **Pink.** Delicate shell pink with wide green throat and 4" ruffled flower. One of the daintiest pinks grown. This is one you will truly love. Ht. 20". June and July. \$5.00.

PINK RIPPLES. Dormant. (Russell) **Pink.** Wide petaled, extremely ruffled, true shell pink flower slightly suffused with apricot with a green throat. Ht. 2 ft. May and June. \$20.00. (See front cover.)

PINK SUPREME. Dormant. (Russell) **Pink.** A neon colored rose pink 4½" recurved flower with a green throat. This flower is much pinker as the morning ends. Ht. 2½ ft. June and July. \$20.00.

PIONEER'S DREAM. Semi-Evergreen. (Russell) **Ivory.** A true ivory-yellow, seven-inch flower, slightly overcast with a glistening gold dust and with an apple-green throat—imagine that! Ht. 3 ft. May, June and again in September. \$3.00 each; 2 for \$5.00.

PRIDE OF JUNE. D. (Russell) **Red.** 5" velvet red. Ht. 3'. June. \$2.25.

RED FRILLS. E. (Russell) **Black Red.** Blackest of black with a velvety sheen in a 4" wide petaled variety with a sunburst throat. I could never offer this at this price if it were not a fast grower. Ht. 2½'. May and June. \$2.25.

RED FURY. D. (Russell) **Red.** 3" velvet black red flower. Ht. 3'. June. \$2.25.

RED TRUMPETS. Dormant. (Russell) **Red.** Truly a brilliant red triangular shaped 5" flower with a golden throat. Extremely profuse bloomer. Ht. 3 ft. May and June. \$7.50. (See front cover.)

ROLL CALL. Dormant. (Russell) **Gold.** Huge 3" deep gold. Open flower, fairly full. Ht. 2½ ft. June, July. \$3.00 each; 2 for \$5.00. (See page 2.)



ROYAL PAINTED LADY

SPRING CALL
See page 17

ROYAL PAINTED LADY. Dormant. Russell.

Copper.

A giant 7" wide petaled flower of a velvety deep copper to red with deeper veins through the entire flower and a green throat. Ht. 2½ ft. April & May. \$10.00.

RUBY SUPREME. Evergreen. (Wheeler) Red.

Wide-open luminous ruby-red, 5½-inch bloom with green-gold throat. A real beauty. May, June. \$1.00 each; 3 for \$2.50.

SAM MOBLEY. Dormant. (Russell) Red.

Carmine red petals with an ivory midrib. Its buff sepals are overlaid with carmine and has a deep gold throat. Huge five-inch bloom. Ht. 2 ft. May, June. \$2.25 each; 3 for \$5.00.

SEA CAPTAIN. D. (Russell) Gold. Huge, almost rounded 6" flower with the widest of wide petals. A pure palest gold that seems never to quit blooming. Ht. 3'. April, May and June. \$3.00.

RUSSELL MINIATURES—18 to 24" tall.
Listed throughout Catalogue



SILVER DROPS. E. (Russell) **Yellow.** This beautiful 6" greenish yellow, truly orchid shaped flower, with its narrow twisted petals, is one of the most alluring things in our garden. A flower arranger's delight. Ht. 18". April, May, and again in July. \$3.00.

SMILES. D. (Bremken-Armstrong) **Salmon.** 5" salmon pink. Ht. 3'. June. \$2.25.

SPRING CALL. Dormant. (Russell) **Red.** This rosy red 4½" flower has a slight lavender overcast with a canary throat. This is truly an eye catcher in our fields, and a recurrent bloomer. Ht. 3 ft. June & July. \$5.00. (See page 16.)

STARS OVER DALLAS. Evergreen. (Russell) **Lemon.**

One of the palest lemons, with a cool green throat and a green cast over the entire flower. Its wide petals are slightly twisted and recurved and are of excellent texture. A full five-inch beauty growing 3 feet high. April to June. \$3.00 each; 2 for \$5.00.

SULIN. Dormant. (Nesmith) **Bi-Tone.** Orchid pink petals, light yellow sepals. Very profuse. Ht. 35 inches. July, August. \$1.00 each; 3 for \$2.50.

SUNDROPS. D. (Russell) **Yellow.** Beautiful buttercup yellow 4" bloom. Ht. 2'. May. \$2.25.

SURF RIDER. Evergreen. (Russell) **Brown.** A huge six-inch flower with rosy brown petals, lighter sepals and a green throat. Ht. 3 ft. June, July. \$2.00 each; 3 for \$5.00.

SYMPHONIC BELLS. E. (Russell) **Canary.** Giant 7" ruffled canary flower. Grows 2½' high and is simply enveloped in blooms in April and May and again in July. \$3.00.

TEXAS SUNSET. E. (Russell) **Rose-Purple.** Deepest old rose with a deeper wide purple eye zone and a green throat. The 5" ruffled flower has deep purple veins. Magnificent when planted with lemon colors. Ht. 3'. May and June. \$3.00.

THE HEIRESS. D. (Russell) **Wine.** 4" rosy wine. Ht. 3'. May. \$2.25.



TAJ MAHAL

See page 4

TINY RUBIES. E. (Russell) **Red.** Brilliant velvety red dwarf. Just the thing we have been looking for, for the foreground. Tiny green throat and a 4" fully wide open flower that glistens in the sun. Ht. 20". May and June. \$3.00.

UNFORGETTABLE YOU. Dormant. (Russell) **Red.**

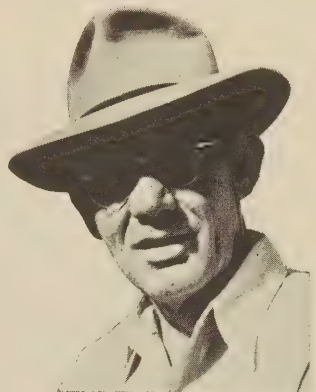
A wide petaled brilliant cardinal red. Extremely profuse blooming four-inch open flower with a beautiful golden throat. We love this one. Ht. 2 ft. June, July. \$2.00 each; 3 for \$5.00.

VIOLET QUEEN. D. (Russell) **Violet.** 4" deep orchid violet bloom. Ht. 2'. May. \$2.25.

YOUNG LOVE. D. (Russell) **Gold-Purple.** Magnificent gold with the deepest red purple eye zone. Not an orange with an eye as so many of them are, but a true gold with a beautiful apple green throat. 6", wide petaled bloom. This is my favorite of all the eye zones. Ht. 3'. May and June. \$3.00.

We could have listed this year perhaps five hundred more varieties, but it was our aim to list only the best in this catalog. My pledge to you, my valued customers, the best varieties in the best heavy plants that we have ever shipped from this nursery before. Every plant is sent to you on a strict money-back guarantee. **YOU MUST BE SATISFIED OR YOUR MONEY WILL BE REFUNDED.**

H. M. RUSSELL



OUR HARDEST DECISION

In 1956 we made one of the hardest decisions we ever made in all of our thirty years of growing Daylilies, and that was in making up our minds to discard more than three hundred varieties. When you have originated a plant and sold thousands of them, and they are loved all over America, it is a hard thing to discard some of them. But we have not allowed sentiment to run away with us when better Daylilies have taken their place. We have simply plowed up these old varieties. We have discarded better varieties than some people are offering for \$2.00 to \$5.00 each, simply because we have developed better ones. I remember the time when there was only one other firm besides ourselves in all America advertising Daylilies. Now, perhaps, there are several thousand. The time has now come when you can buy millions of Daylilies right around the corner from where you live, but we are happy to know that people still "trek" to us for our varieties. Yes, you will even find many of the other growers "treking" here, too, and for that we are grateful.

OUR STOCK IS POSITIVELY TRUE TO NAME

The time has come when so many people are offering Daylilies for sale that it is well to know the source from where they came. Many people who I know are thoroughly honest are offering varieties untrue to name. They have simply gotten them through trades and otherwise with other small growers who are not as careful with their labeling as they should be and are offering these varieties with the best of intentions untrue to name. We know this to be a fact through our many visits to gardens throughout most of the United States, as well as having felt the sting ourselves in ordering varieties for our display gardens. We never offer a variety for sale that was originated by another grower until it has bloomed for us and been checked and double checked. Still, we are not infallible, and should we ever make a mistake in our shipping shed, which is extremely rarely ever done, we will be happy to rectify this with you.

We Ship Only Vigorous Heavy-Size Plants

DAYLILIES ARE NOT EXPENSIVE

When you talk about sixty cents for this and a dollar for that and three dollars upwards for those, it may sound costly for the more inexperienced—especially when they have on their minds a single bulb. The fact is that Daylilies are not bulbs at all but Herbaceous Perennials that will grow into lovely clumps, increasing in size every year for many years, if left undisturbed. Notice the array of blooms in the photograph on page 19. These are three year old clumps with more than four hundred buds on each. Imagine what would happen to your garden if you had a hundred such clumps in it! What a pleasure it is to know that they are permanent, disease proof, and do not have to be petted and pampered.



After one year's growth, more than a hundred buds on each clump. There should be more every year if left undisturbed.

Estate PACKAGE



We had the old barn. Daylilies dressed it up.

The plants in this "Package Offer" have been carefully selected for those of you who have large yards. These will transform your yard into a Daylily Paradise in one planting. This group includes some of the very newest and best varieties for specimen plantings, Liriope for bordering the beds; and beautiful, but lower priced unnamed varieties for mass plantings.

100 Plants — "MAJESTIC" LIRIOPE	\$35.00 Value
<small>(Described on Page 23)</small>	
100 Plants — 1958 Frosty Morn Series	\$35.00 Value
<small>(Described on Page 22)</small>	
100 Plants — 1958 Spotlight Series	\$35.00 Value
<small>(Described on Back Cover)</small>	
All 300 Plants	Total \$105.00 Value

Plus \$52.50 in rare named varieties of our choice for specimen plantings (See Bonus Offer, page 9.)

All for only \$79⁵⁰



RUSSELL & FAY
1958

Pink

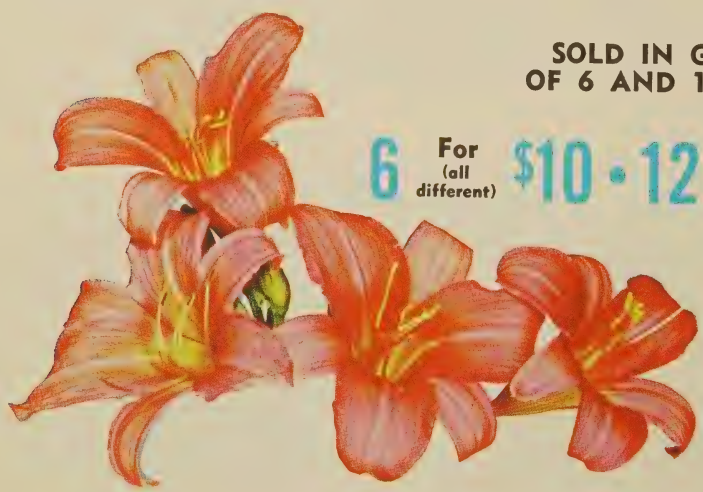
SERIES



Everybody wants pinks! But while they are new and extremely scarce, not everyone wants to pay the higher prices for name varieties. We have selected for you, from among some of the better varieties developed by Mr. Orville Fay and us, some of the better pinks that everyone can afford. Many of these are simply too much like varieties that we have already placed on the market for us to name. Therefore, they will be sold in collections only. They are varied shades of rose pink, raspberry pink, melon pink and even baby pinks. They are priced higher than we have ever offered in a pink series, but we think they are as good as many \$25.00 ones on the market today. They will all be personally selected by Mr. Russell and we are sure you will be more than pleased. No two will be alike, but we cannot guarantee any particular shade for you at this price.

**SOLD IN GROUPS
 OF 6 AND 12 ONLY.**

6 For (all different) **\$10 - 12** For (all different) **\$17.50**



A Complete Daylily Garden for \$6.00



12 Varieties — Every One Different

Would you like a brand-new selection of Daylilies—twelve brand-new plants, every one a different variety, in a different color, for a price lower than you would be asked to pay for an ordinary perennial? Here we offer some Russell creations at a price no one else has been able to duplicate for such fine sorts. We have selected some of the outstanding varieties from our field of over thirty acres to make up this Complete Daylily Garden.

This collection will cover just about the entire season's bloom. The different varieties bloom at different times, giving you about five months of bloom when the plants are established. Remember, these are hardy plants that, once set out, regardless of where you live in America, will remain a permanent picture in your garden. These varieties will come to you unnamed but all labeled as to color.

- 3 Lemons and Gold—each a different variety
- 3 Reds and Wines—each a different variety
- 3 Pastels (Rose, etc.)—each a different variety
- 3 Bi-color Combinations—each a different variety

All 12 Postpaid for Only \$6.00

The NEW

1

9

5

8

Frosty Morn
SERIES

Regardless of how many yellows you have these will be different

The years spent cross-breeding Doublelilies have taught us that while the yellows certainly do predominate, it's still the hardest color to obtain in a worthwhile variety. We have selected from more than 100,000 hybrids, a few choice ones to name. Some of these offered here are entirely too much like those more expensive varieties in those colors that have already been named for us to ever name these for general distribution. Therefore, those of you who want magnificent effects in your garden in cool lemon and gold shades, and care nothing for names, take advantage of this offer. By no means do we ever offer a plant in this series until it has been checked and double-checked. They are unsurpassed as cut flowers in that they remain open so much longer in the evening than do the ordinary varieties. Do not confuse these with the unchecked seedlings offered by some growers. Sold in a mixture only.

6 for \$3.00 • 12 for \$5.00 • 25 for \$9.00 • 100 for \$35.00, postpaid
(4 Groups of 25)

A small part of our thirty-eight acres of Homesteadville, more than two million plants.



"Majestic" LIRIOPE

The Russell Strain

THE FINEST EVERGREEN BORDER PLANT

LIRIOPE is the Answer to Gardener's Quest for
Colorful and Easily-Raised Border Plant

Think of having an evergreen edging plant that reaches only 12 to 15 inches in height, resists all diseases, grows in either acid or lime soil, in full sun or very dense shade, and stays uniform in growth! Liriope Majestic is just such a plant; it grows into a beautiful compact clump that does not have to be transplanted for many years. I never saw a garden subject that could take so much punishment as the plants we have sent out for trial in many different parts of the country. They have held up perfectly through the droughts and hot winds of Oklahoma, the wet seasons of the Gulf coast, and the hard freezes of the northern and eastern states. Of course this plant, like any other, will repay you many times over for any extra care you may give it, but it will grow even when neglected. Blooms in midsummer on lilac-pink spikes. We positively guarantee that every plant we send out will do all we claim for it, and will thrive in your garden regardless of the soil and exposure.



THE HARDY EVERGREEN WONDER PLANT GROWS IN FULL SUN OR DEEP SHADE.

A permanent edging plant is much to be preferred to either bricks or a trench as an edging for flower beds and borders. But next comes the question of finding exactly the right plant. Our long rambling borders may be in the sun, but sometimes they run into shady places. Generally speaking, plants that like sun refuse to grow well in the shade. Borders near large trees present another problem, for they often get ragged-looking in such a location.

Here is where Liriope Majestic comes in, for I believe it is the answer to the gardener's quest for an ideal edging plant. After growing stock of it for many years I find it can be used practically anywhere for edging. It has been successfully planted as close to trees as 6 inches, and either sun or shade suits it. After the plants are once established they prevent lawn grass from pushing into the flower beds beyond. And in mowing the grass, all you have to do is run the mower up close to the plants, and the job is done.

6 PLANTS . . .	\$3.00	25 PLANTS . . .	\$ 9.50
12 PLANTS . . .	\$5.00	100 PLANTS . . .	\$35.00

100 Plants make a border 100 feet long

The New 1958 Spotlight Strain



This new series consists of a combination of the best of the Sun, Fay and Russell varieties. Here you will find entirely new color combinations and not a solid yellow in the entire lot. These are by no means to be confused with the ordinary run of seedlings, such as you see advertised for twelve and fifteen cents each, for all of these have been checked-checked and double checked for their superior quality as to blooming habits, texture and color. They are simply too much like some of the more expensive varieties that are already on the market for us to grow and name. You can be assured that to get one plant out of this lot we had to discard up to one hundred in the class—let's quit running a foot race to one who has the most varieties of Daylilies. Let's grow fewer varieties and better ones, and in this lot this is just what you will be doing. If you want real beauty, and care nothing about names, then by all means take advantage of this offer. These varieties have a varied blooming season, and should give you five months of blooming after becoming established.

Reds, Wines, Maroons, Purples and Two-Tones

6 for \$3.00 • 12 for \$5.00 • 25 for \$9.00 • 100 for \$35.00

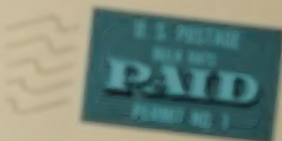
(A Gross of 25)

ALL SENT POSTPAID

RUSSELL GARDENS

SPRING, TEXAS

BETTER POSTAGE
GUARANTEED
Form 3547 Required



U. S. DEPARTMENT OF AGRICULTURE

LIBRARY

WASHINGTON 25, D. C.

OFFICIAL BUSINESS

PRINTED MATTER

FORNALLY FOR PRIVATE USE TO BE
RETURNED TO POSTAGE BUREAU
(1954)

BIBLIOGRAPHY DIVISION
LIBRARY, U. S. DEPT. OF AGRICULTURE
WASHINGTON 25, D. C.